

**SPEAKMAN**<sup>®</sup>

*Absolutely the best.*



**SENSORFLO**<sup>®</sup> PRODUCTS CATALOG

# Contents



Flush Valves ..... 4



Luxury ..... 6



Vandal Resistant ..... 8



Multi-Purpose ..... 10



Manual Override ..... 11



## Why Sensor?

### **Hygienic Touch-Free Operation:**

Hospitals, schools, food services, public facilities and many other water-using environments are specifying touchless sensor products, for one very important reason; the hands-free operation eliminates cross-contamination of disease-causing germs that are transmitted via a manual faucet handle. Removing the faucet handle creates a cleaner, safer washroom environment.

### **Water Conservation:**

Electronic faucets are highly efficient dispensers of water. They operate only when your hands are underneath the spout. Virtually all of the water is being utilized during the washing and rinsing cycle. By comparison, manual faucets will operate as long as a user allows, whether or not the water is actually being used. Manual metering faucets are slightly better, as they provide an automatic shut-off feature; however, metering faucet run times are erratic, and the faucets are expensive and time-consuming to repair. Sensor faucets, especially when used with flow-reducing outlets, use the bare minimum of water necessary, with essentially no waste.

### **Operating Cost Reductions:**

Water conserved through the use of sensor faucets can be directly translated into dollars saved. When savings from reduced sewer and water heating costs are factored in, the dollars saved can be substantial. Typical water reductions can reach 80-90%, simply by converting from manual to sensor faucets. Studies show that paybacks on product conversions can run from 1–3 years, and the return on new-construction upgrades can be realized in as little as 6 months to 2 years, depending on site conditions. With sensor, it pays to be green!

## Why Speakman?

### **Quality & Reliability From a Name You Can Trust:**

For more than 140 years, Speakman has been making the finest plumbing products in the industry. The last 25 years have been spent perfecting our sensor faucets. All Speakman sensor faucets are designed, engineered and produced uniquely to our exacting standards, and are routinely evaluated and continuously improved. Our electronics design has passed rigorous testing by third-party laboratories. All of our sensor products are certified by IAPMO to UPC, American and Canadian standards.

### **A Wide Variety of Products and Options For Every Market:**

Speakman's design philosophy is to evaluate the requirements of each market segment, and to create the design and performance features required by each. Our manual override system, unique to Speakman, was created to meet the special needs of the healthcare and food service industries for a dual-control faucet with a failsafe back-up. Our vandal-resistant line was created to meet the tough challenges posed by educational and public building users and abusers. Our new luxury line was designed to meet the style requirements of upscale hotels and commercial buildings. With a wide variety of product lines and options, Speakman is sure to have a product to meet your needs.

### **Designed With the User in Mind:**

All Speakman sensor products are designed with the installers, maintainers and users in mind. Simplicity of design is the key. All systems are pre-set and require no adjustment or system programming. All units are pre-assembled for quick installation, with no wall-mounted components. We provide simple low-cost repair kits that keep the products operating reliably and inexpensively. All of the faucet operating features are intuitive and the utmost in simplicity.



# Flush Valves



## SUV-2000 ▶ Urinal Flush Valve

Urinal valve body replacement to existing Sloan®/Zurn® installation (no trim)

## SWCV-2000 ▶ Water Closet Valve

Water closet valve body replacement to existing Sloan®/Zurn® installation (no trim)

- ▶ Solid brass polished chrome plated valve and cover
- ▶ Adaptable to right and left hand installations
- ▶ Factory set to meet 1.0 GPF for urinal and 1.6 GPF for water closets
- ▶ Secure threaded tailpiece adjustment
- ▶ Filter located within tailpiece
- ▶ Adjustable sensor focal distance and beam direction
- ▶ Renewable seating surface
- ▶ Maintenance mechanical override
- ▶ 6-volt lithium battery
- ▶ Low battery warning light
- ▶ Certified to UPC, ASSE 1037-90 and CSA B125.3-05

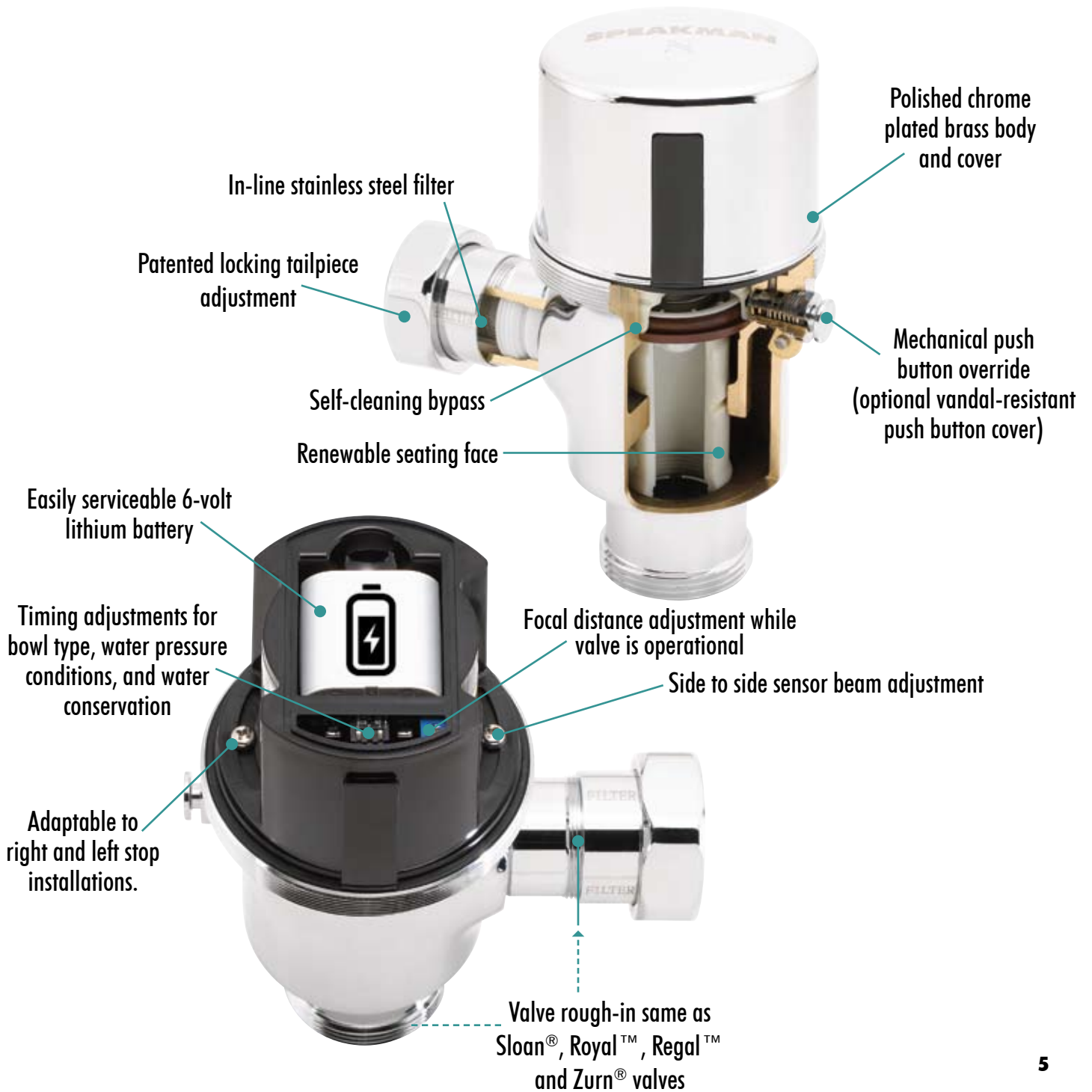


## SUV-2110 ▶ Urinal Valve

Urinal valve, 3/4" sweat solder kit & stop, 3/4" x 9" vacuum breaker and spud coupling

## SWCV-2230 ▶ Water Closet Valve

Water closet valve, 1" sweat solder kit & stop, 1-1/2" x 9" vacuum breaker and spud coupling



# Luxury



HOTELS ▶ COMMERCIAL ▶ PRIVATE WASHROOMS



S-9300 ▶ Sensor Faucet

Battery powered

S-9400 ▶ Sensor Faucet

AC powered

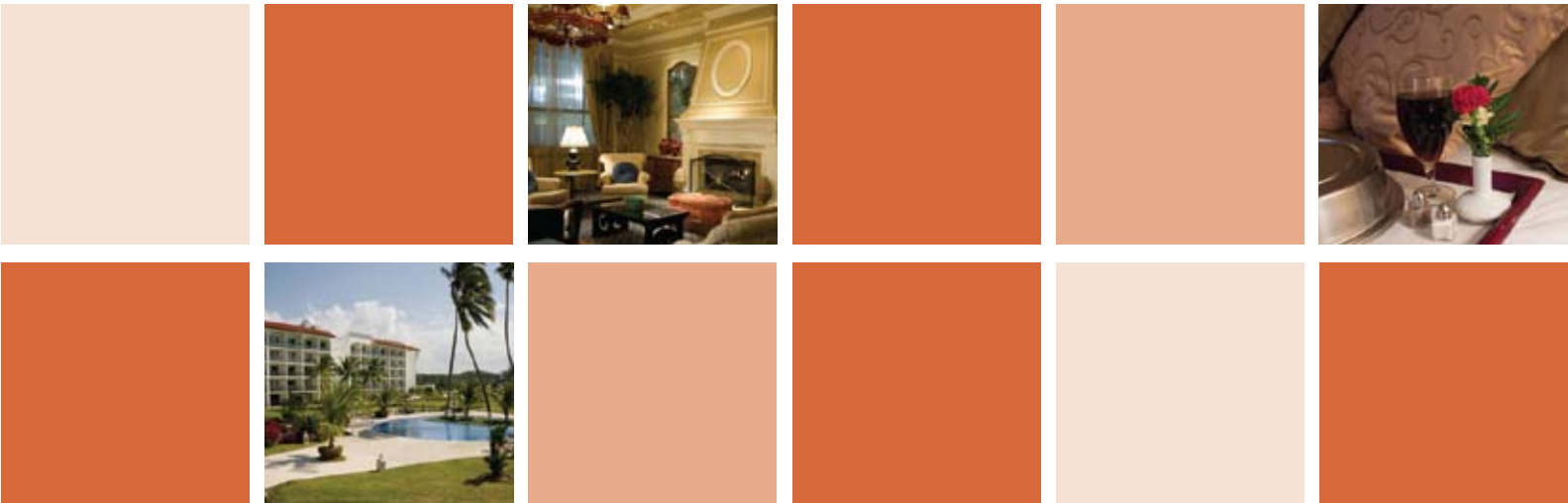


S- 9510 ▶ Sensor Faucet

Battery powered

S- 9610 ▶ Sensor Faucet

AC powered



- ▶ All Speakman faucets come in a variety of low flow rates to suit water conservation requirements for LEEDS, Green Building Council, state and local code requirements, etc.
- ▶ All solid brass construction provides for a beautiful and durable installation
- ▶ Available in battery or AC power
- ▶ Models are available for single hole basin or with a 4" or 8" deck plate
- ▶ Temperature can be regulated with either an above or below counter mixer
- ▶ ASSE 1070 approved thermostatic temperature control is also available
- ▶ All mixing valve options have built-in checks
- ▶ No components are wall mounted
- ▶ Preset maximum run time
- ▶ Certified to UPC and ASME A112.18.1/CSA B125.1 standard.

S-9100 ▶ Sensor Faucet

Battery powered

S-9200 ▶ Sensor Faucet

AC powered



# Vandal Resistant



## SCHOOLS ▶ UNIVERSITIES ▶ PUBLIC FACILITIES ▶ STADIUMS

### 4" LAVATORY FAUCETS

.....



- ▶ Provided with a 0.5 GPM outlet already installed (2.0 GPM outlet also provided)
- ▶ Designed for maximum vandal resistance and easy maintenance
- ▶ All components are above the counter, inside the faucet housing
- ▶ Pre-assembled for simple installation
- ▶ All maintenance performed above counter
- ▶ Hot and cold check valves and filters are standard
- ▶ Integral mixing valves standard
- ▶ ASSE 1070 approved thermostatic temperature control is also available
- ▶ Filter easily reached and cleaned above counter
- ▶ Lithium batteries provide extended battery life
- ▶ Lengthened spout reduces splashing
- ▶ Cap provided for tempered water installation
- ▶ Automatic shut-off after 60 seconds
- ▶ Metal jacket option for AC transformer wire (S-9020)
- ▶ Certified to UPC and ASME A112.18.1/CSA B125.1 standard

### S- 9010 ▶ Vandal Resistant Sensor Faucet

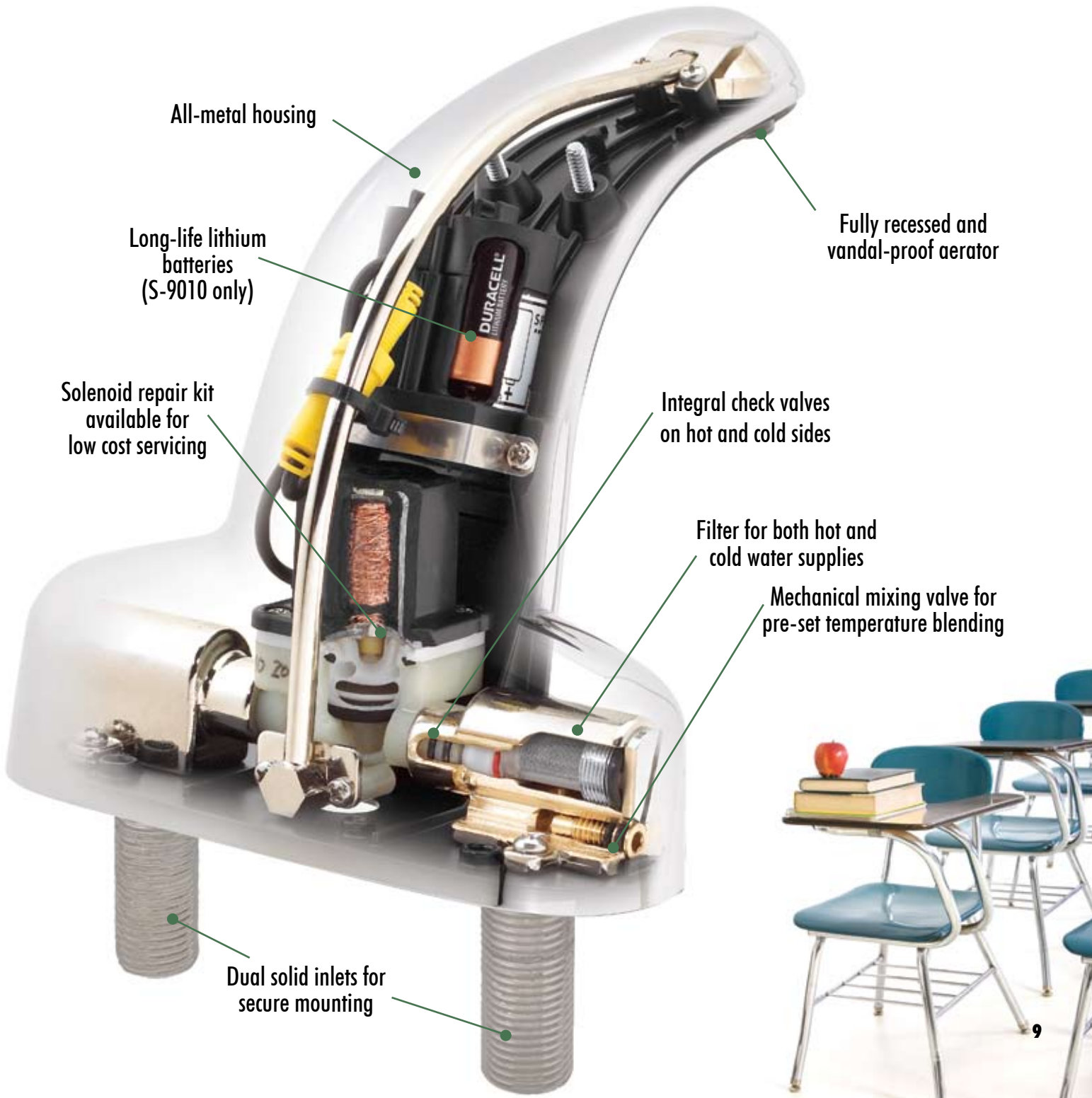
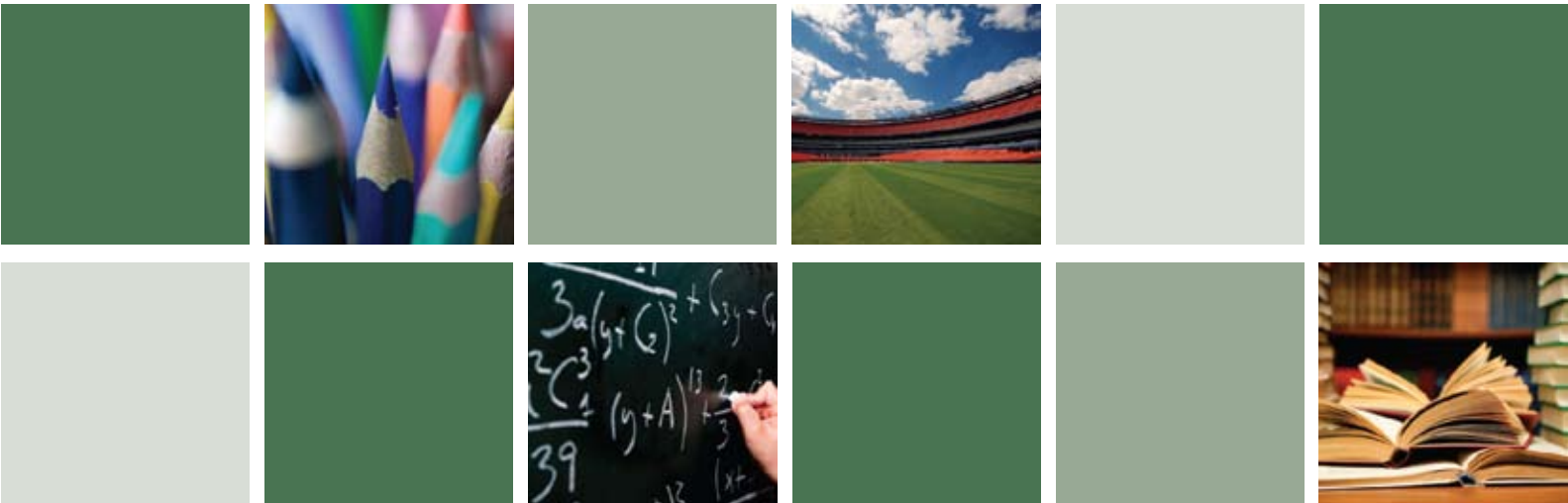
.....

Battery powered

### S- 9020 ▶ Vandal Resistant Sensor Faucet

.....

AC powered



All-metal housing

Long-life lithium batteries (S-9010 only)

Solenoid repair kit available for low cost servicing

Fully recessed and vandal-proof aerator

Integral check valves on hot and cold sides

Filter for both hot and cold water supplies

Mechanical mixing valve for pre-set temperature blending

Dual solid inlets for secure mounting

# Multi-Purpose



## HOSPITALS ▶ AIRPORTS ▶ OFFICES ▶ ETC



- ▶ All Speakman faucets come in a variety of low flow rates to suit water conservation requirements for LEEDS, Green Building Council, state and local code requirements, etc.
- ▶ Above counter battery and sensor for easy maintenance
- ▶ Available in battery or AC power
- ▶ Models are available for a single hole basin or with a 4" or 8" deck plate
- ▶ Temperature can be regulated with either an above or below counter mixer
- ▶ ASSE 1070 approved thermostatic temperature control is also available
- ▶ All mixing valve options have built-in checks
- ▶ No components are wall mounted
- ▶ Preset maximum run time
- ▶ Certified to UPC and ASME A112.18.1/CSA B125.1 standard.



S- 9110 ▶ Vandal Resistant Sensor Faucet

Battery powered

S- 9210 ▶ Vandal Resistant Sensor Faucet

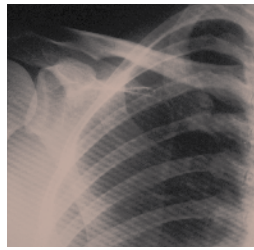
AC powered

S- 8720 ▶ Vandal Resistant Sensor Faucet

Battery powered

S- 8820 ▶ Vandal Resistant Sensor Faucet

AC powered



# Manual Override



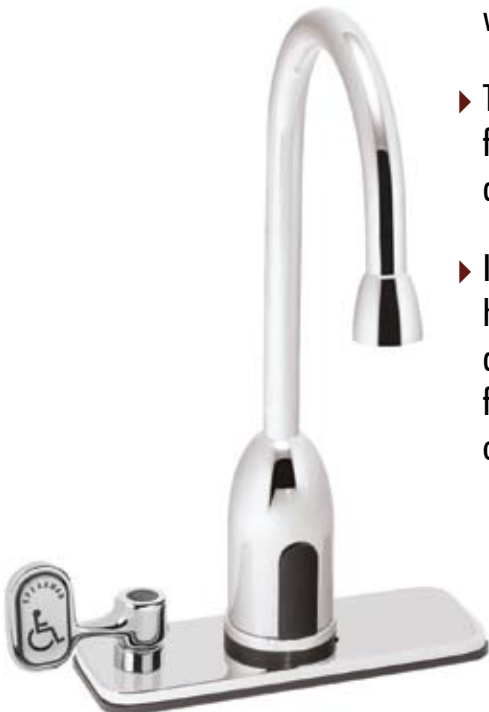
HEALTHCARE ▶ RESTAURANTS ▶ PRIVATE WASHROOMS



▶ Speakman electronic faucets with our patented manual override option provide dual hands-free electronic activation along with manual control when desired.

▶ The manual override system also provides failsafe back-up in the event of power outage or system interruption.

▶ If your application demands that the user have access to touch-free hygienic washing as well as the need for manual control for filling or cleaning, the Speakman manual override provides the perfect solution.



## Base Model Outline (See specification sheets for additional options)

Battery Operated Models	Multi-Purpose	Luxury		
	Lavatory	Gooseneck	Modern	Angled Spout
Single Basin	S-8700	S-9100	S-9300	S-9500
Single Basin + Under Counter Mixer	S-8701	S-9101	S-9301	-
4" Deck	S-8710	S-9110	S-9310	S-9510
4" Deck + Under Counter Mixer	S-8711	S-9111	S-9311	-
4" Deck + Above Counter Mixer	S-8712	S-9112	S-9312	S-9512
4" Deck + Manual Override	S-8717	S-9117	S-9317	-
4" Deck + Manual Override + Under Counter Mixer	S-8718	S-9118	S-9318	-
8" Deck	S-8720	S-9120	S-9320	-
8" Deck + Under Counter Mixer	S-8721	S-9121	S-9321	-
8" Deck + Above Counter Mixer	S-8722	S-9122	S-9322	-
8" Deck + Manual Override	S-8727	S-9127	S-9327	-
8" Deck + Manual Override + Under Counter Mixer	S-8728	S-9128	S-9328	-
8" Deck + Manual Override + Above Counter Mixer	S-8729	S-9129	S-9329	-

A/C Powered Models	Multi-Purpose	Luxury		
	Lavatory	Gooseneck	Modern	C-Spout
Single Basin	S-8800	S-9200	S-9400	S-9600
Single Basin + Under Counter Mixer	S-8801	S-9201	S-9401	-
4" Deck	S-8810	S-9210	S-9410	S-9610
4" Deck + Under Counter Mixer	S-8811	S-9211	S-9411	-
4" Deck + Above Counter Mixer	S-8812	S-9212	S-9412	S-9612
4" Deck + Manual Override	S-8817	S-9217	S-9417	-
4" Deck + Manual Override + Under Counter Mixer	S-8818	S-9218	S-9418	-
8" Deck	S-8820	S-9220	S-9420	-
8" Deck + Under Counter Mixer	S-8821	S-9221	S-9421	-
8" Deck + Above Counter Mixer	S-8822	S-9222	S-9422	-
8" Deck + Manual Override	S-8827	S-9227	S-9427	-
8" Deck + Manual Override + Under Counter Mixer	S-8828	S-9228	S-9428	-
8" Deck + Manual Override + Above Counter Mixer	S-8829	S-9229	S-9429	-

### Lead-Free Faucets:

All faucets will eventually be lead-free but during the transition period use a "-CA" suffix when you order

### Vandal Resistant Faucet:

S-9010 Battery Operated Model  
S-9020 AC Powered Model

### Battery Operated Urinal Flush Valve:

SUV-2000 Valve Only  
SUV-2110 Valve with stop, VB and trim

### Battery Operated Water Closet Flush Valve:

SWCV-2000 Valve Only  
SWCV-2230 Valve with stop, VB and trim

# SPEAKMAN®