

# SPEAKMAN COMPANY

## **SC-3001 thru SC-3049 Installation, Operation, & Maintenance Instructions** **COMMANDER® WIDESPREAD LAVATORY COMBINATION**

### DESCRIPTION

Speakman polished chrome plated COMMANDER widespread lavatory combination with PERFECT® valves. 1/4 turn ceramic cartridges covered by a 25 year Silver warranty. Vandal-resistant handles with color-coded indexes. Brass gooseneck (swivel or rigid) or brass cast spout. Adjustable centers from 6" to 12". Accommodates installations up to 2" thick. Vandal-resistant water conserving aerated outlet device reduces flow to 2.2 GPM/8.4 LPM to meet existing ASME A112.18.1/CSA B125.1 Standard.

### SPECIFICATIONS

SUPPLY: 1/2-14 NPSM COMPRESSION COUPLING OR 1/2 COPPER SWEAT CONNECTIONS.

FLOW RATE: 2.2 GPM/8.4 LPM (MAX)

SHIPPING WEIGHT: 5.5 LBS. (SC-3004-LD)

### OPTIONS

◇ BO – Vandal-Resistant 0.5 gpm Flow Control Device	◇ LF – Vandal-Resistant Laminar Flow Control Device (2.2 gpm)	◇ VB6 – 6" Deep Spread Rigid Gooseneck Spout with Vacuum Breaker
◇ FC – Laminar Flow Plain End Gooseneck Spout (2.0 gpm)	◇ GB – Vandal-Resistant 1.5 GPM Aerator Outlet Device	◇ VB8 – 8" Deep Spread Rigid Gooseneck Spout with Vacuum Breaker
◇ D75 – Diamond 75 Escutcheons and Handles	◇ SO – Rose Spray Outlet Device (Gooseneck Spout Only)	◇ 4 – 3-3/4" Deep Spread Gooseneck Spout
◇ CWO- Cold Water Only	◇ TWI – Tee w/Extra Inlet Port	◇ 8 – 8" Deep Spread Gooseneck Spout
◇ HS – Hose & Spray	◇ ST – Serrated Tip (For VB6/8 only)	◇ 9 – 9" Deep Tubular Swing Spout
◇ LD – Less Drain	◇ SW – Swivel Spout (For VB6/8 only)	◇ 12 – 12" Deep Tubular Swing Spout
◇ MI – Metal Indexes	◇	◇

### INSTALLATION INSTRUCTIONS

**Important-** If installing an optional VB8/6 Rigid vacuum breaker spout and space is limited between deck fitting holes and backsplash/wall, install the spout to the flange assembly at this time (See Step #5).

**1)** Remove top flanges & rubber washers from the body assemblies and screw down the locknuts. Place cup washers onto bodies. Working from below the sink, insert body assemblies through holes in sink or countertop. From above sink, place rubber washers onto bodies. Now screw flange nuts onto bodies with flat side up, flush with top of bodies and tighten flange nut set screws (1/16 hex key). From under sink, screw locknuts up hand tight. Position bodies so that the side outlets are accessible and wrench tighten locknuts while holding bodies in place. **2)** Apply sealant around base underside of center spout or gooseneck flange assembly. Position assembly in hole of sink or countertop and push down firmly to seal. From under sink, slip the channel washer, then channel spacer onto center shank. Screw shank nut on and tighten. Wipe off excess sealant from around the spout or flange base. **3)** From under sink, screw swivel tee assembly, with rubber washer in place, onto end of center shank and tighten. **NOTE: DO NOT OVER TIGHTEN.** Screw flex hoses onto outlets of bodies and tighten. Screw other end of hoses onto swivel tee assembly and tighten. Connect water supply lines to inlets (1/2-14 NPSM male threads) of bodies and tighten coupling nuts. **4)** From above sink, screw trim onto body assemblies and hand tighten. Slip trim sleeves onto spindles. Position handles and screw onto spindles. Position index buttons on handles and press into place. **5)** If applicable, assemble gooseneck to flange assembly. **NOTE-** For rigid gooseneck, place locking washer in flange assembly before assembling gooseneck. Wrench tighten gooseneck collar nut. **For Rigid Vacuum Breaker Spout- VB6/8 (Less "SW" option):** Make sure the locking washer is removed from flange outlet. **IMPORTANT- Install rigid adapter into flange and wrench tighten** (See Rough-In on back side of sheet). Apply thread locker/sealant to the spout tapered pipe threads. Screw the spout into the adapter until the threads start to get snug. **Note-** When positioning the spout, hold adapter hex with a wrench, so flange does not rotate. Holding the hex of the adapter with a wrench, tighten the spout at least 1/3 turn to the proper position (Do not over tighten spout). Remember that the thread locker/sealant will lock and seal the spout assembly in place. **6)** With drain installed (see drain instructions), turn water supplies on and flush both hot and cold sides of faucet. If applicable, install outlet device. Check all connections for leaks.

### DRAIN INSTALLATION INSTRUCTIONS

**POP-UP DRAIN: 1)** Unscrew guide plug from tee/tube. Remove lift plug, locknut, fibre washer, and rubber washer from guide plug. Apply sealant around underside of flange on guide plug. Insert guide plug through drain hole in sink and reassemble rubber washer, fibre washer, and locknut. Hand tighten locknut. **2)** Insert fibre washer into tee/tube (Pipe sealant can also be used with washer). Assemble tee/tube to guide plug and tighten. Position ball rod hole so it faces back of lavatory and hold in place while wrench tightening guide plug locknut. **3)** Insert lift plug, with the lower hole properly positioned for the ball rod, into guide plug. From under sink, insert o-ring into ball rod hole. Lube ball of ball rod with o-ring lube and insert into ball rod hole. Assemble ball rod nut and tighten. **4)** Insert lift rod through hole in center flange or spout. From under sink, slip lift rod through two holes of adjustable lift lever and hand tighten thumbscrew. Slide one side of spring clip onto ball rod. Select the proper hole in lift lever and slip lever onto ball rod. Bend other side of clip onto ball rod and slide into the proper position. **5)** Adjust lift rod in lift lever, so that the top of the lift rod knob is 3/4" from the top of the flange or spout when the drain is in the

open position. Tighten the lift lever thumbscrew onto the lift rod. **6)** Remove the tailpiece, apply thread sealant to the threads and reinstall back into the drain. Tighten the tailpiece and install the trap. Check drain system for leaks. **STRAINER DRAIN:**  
**1)** Screw the locknut all the way down on drain. Slide the fibre and rubber washers all the way down. **2)** Remove top flange and apply sealant around underside of the flange. Properly position flange in sink and press into place. From under the sink, insert the tailpiece into the sink and screw into the top flange, while holding the flange in place. Hand tighten. **3)** Again holding top flange in place, screw locknut up against the sink and wrench tighten. Install the trap and check drain system for leaks.

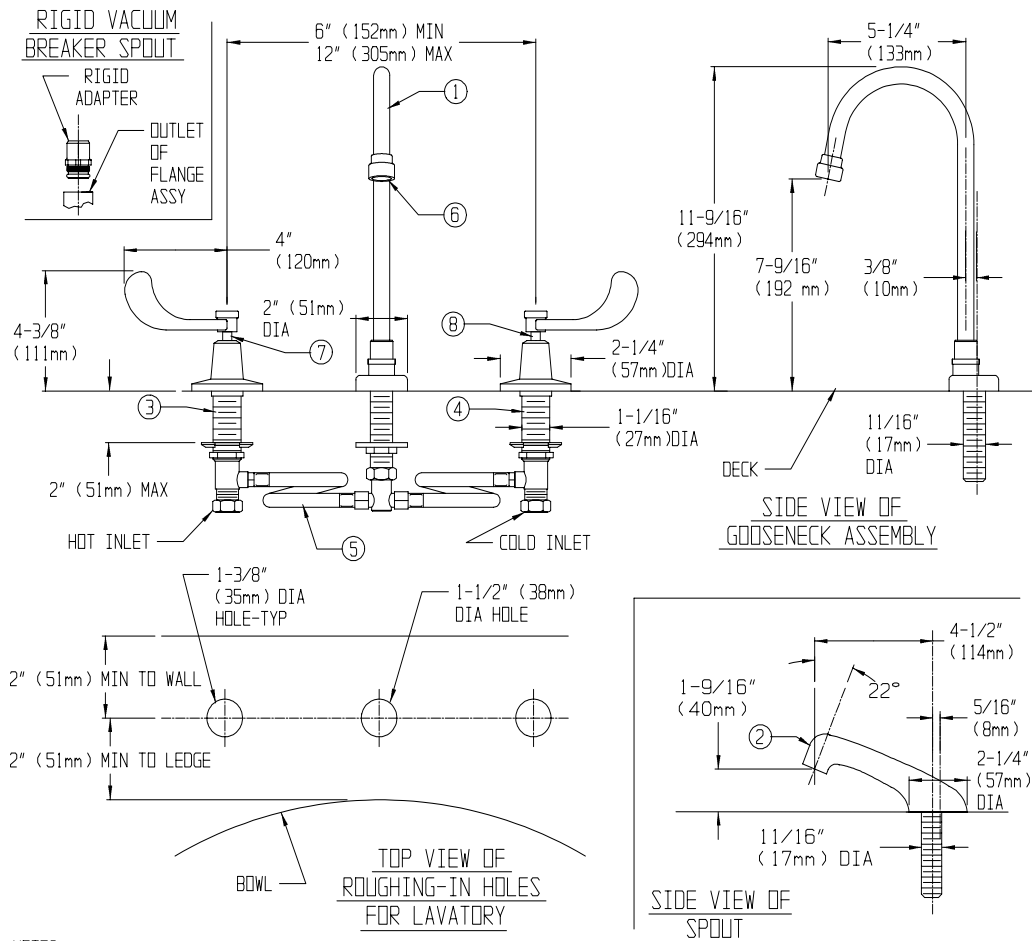
**OPERATION**

Simply rotate the handles 1/4 turn maximum to operate the lavatory faucet.

**MAINTENANCE (CARE and CLEANING)**

Valves are washerless and require no routine maintenance. The gleaming finish of your SPEAKMAN Commander lavatory faucet can be cleaned by using mild soap and warm water. Dry immediately with a soft, clean cloth for best results.

**ROUGH-IN MEASUREMENTS**



**NOTES:**

1. ALL DIMENSIONS ARE IN INCHES (MILLIMETERS) UNLESS OTHERWISE SPECIFIED AND ARE SUBJECT TO CHANGE WITHOUT NOTICE.
2. LAVATORY INLETS ARE SIZED FOR EITHER COUPLING OR SWEAT CONNECTIONS.
3. SC-3004-LD ROUGH-IN PICTURED ABOVE.

**REPAIR / REPLACEMENT PARTS**

<u>ITEM NO.</u>	<u>PART OR GROUP NUMBER</u>	<u>DESCRIPTION</u>
1	RPG18-0213-PC	5-1/4" SPREAD GOOSENECK SPOUT ASSEMBLY
2	G18-0204-PC-NL	SPOUT ASSEMBLY
3	RPG20-1895	END BODY ASSEMBLY (RED) W/ MOUNTING HARDWARE AND HOSE ADAPTER
4	RPG20-1896	END BODY ASSEMBLY (BLUE) W/ MOUNTING HARDWARE AND HOSE ADAPTER
5	G63-0061	FLEX HOSE ASSEMBLY
6	RPG05-0674-PC	2.2 GPM AERATOR ASSEMBLY
7	RPG05-0534	PERFECT VALVE GROUP (RED) W/ TRIM SLEEVE AND SCREW
8	RPG05-0535	PERFECT VALVE GROUP (BLUE) W/ TRIM SLEEVE AND SCREW

**SPEAKMAN®**

PO Box 191 Wilmington, DE 19899 Phone: 800-537-2107 Fax: 800-977-2747  
 Visit us on the web at [www.speakmancompany.com](http://www.speakmancompany.com)