

SPEAKMAN COMPANY

S-8520 Installation, Maintenance & Operation Instructions

SENSORFLO®

SURGEON SCRUB SINK ELECTRONIC VALVE ASSEMBLY WITH ABOVE COUNTER MIXING VALVE

DESCRIPTION

Speakman SENSORFLO electronic valve assembly for use on surgical scrub sink. Polished stainless steel construction. Solenoid with built-in filter. Drain assembly with 1 ½" O.D. tailpiece. UL/CSA approved transformer 120 VAC to 12 VDC with waterproof connectors. Above -counter hot/cold mixer with 8" chrome plated deck plate. Stainless steel braided supply hoses.

SPECIFICATIONS

INLET AND OUTLET SUPPLIES: 3/8" COMPRESSION
SHIPPING WEIGHT: XXX LBS.

INSTALLATION

NOTE: Install gooseneck spout before installing valve assembly.

Leak test valve assembly prior to installation to ensure that solenoid connection has not loosened during shipment. Remove tailpiece from drain assembly and set aside. Apply thread sealant to male thread of mounting adapter and tighten adapter into drain spud. Install drain strainer and spud assembly onto sink. Slip electronic valve assembly onto adapter and hold in position with adapter nut. Do not completely tighten nut at this time. Loosen and remove wing nuts located on bottom of module case and extend case so that face of module is flush with front edge of sink. Swiveling the valve assembly left or right will also aid in positioning the module flush to the face of the sink. Secure case position by re-attaching wing nuts. Adjust the wall braces located at the rear of the unit so that they rest snugly against wall. These braces require only finger tightening to hold them in position. Double check position of module case with front of sink and fully tighten adapter nut. Connect outlet supply hose from spout to top of valve assembly. DO NOT OVERTIGHTEN. Finger tightened plus 1/3 to ½ turn with a wrench is all that is required. Thread drain tailpiece into spud assembly and attach waste piping (not included) to tailpiece.

ABOVE COUNTER MIXER:

Attach supply hoses to mixer before installing to fixture. Assemble the mounting hardware on to mixer shank. From under the sink, pass the mixer shank through the mounting hole. Hold mixer assembly in place with the mounting nut. DO NOT TIGHTEN. Thread the mounting nut onto shank so that the top of the nut is flush with the notched section on top of the mixer unit. From under the sink, tighten the mounting hardware against the underside of the sink. DO NOT OVERTIGHTEN. Connect other end of inlet and outlet hoses. DO NOT OVERTIGHTEN. Finger tightened plus 1/3 to ½ turn with a wrench is all that is required.

ELECTRICAL SUPPLY CONNECTION:

This product has been packaged to protect it from possible damage caused by Electro static discharge. Remove the E.S.D. packaging from connectors and attach spade connections to the solenoid. Make sure spades are fully connected and covered by rubber sleeve. Connect transformer to unit and plug into 120v wall outlet. If electrical supply has been properly connected the green "power on" indicator light at the front of the unit will be lit. Slowly open supply valve(s) and check for water leaks. Unit is now ready for operation.

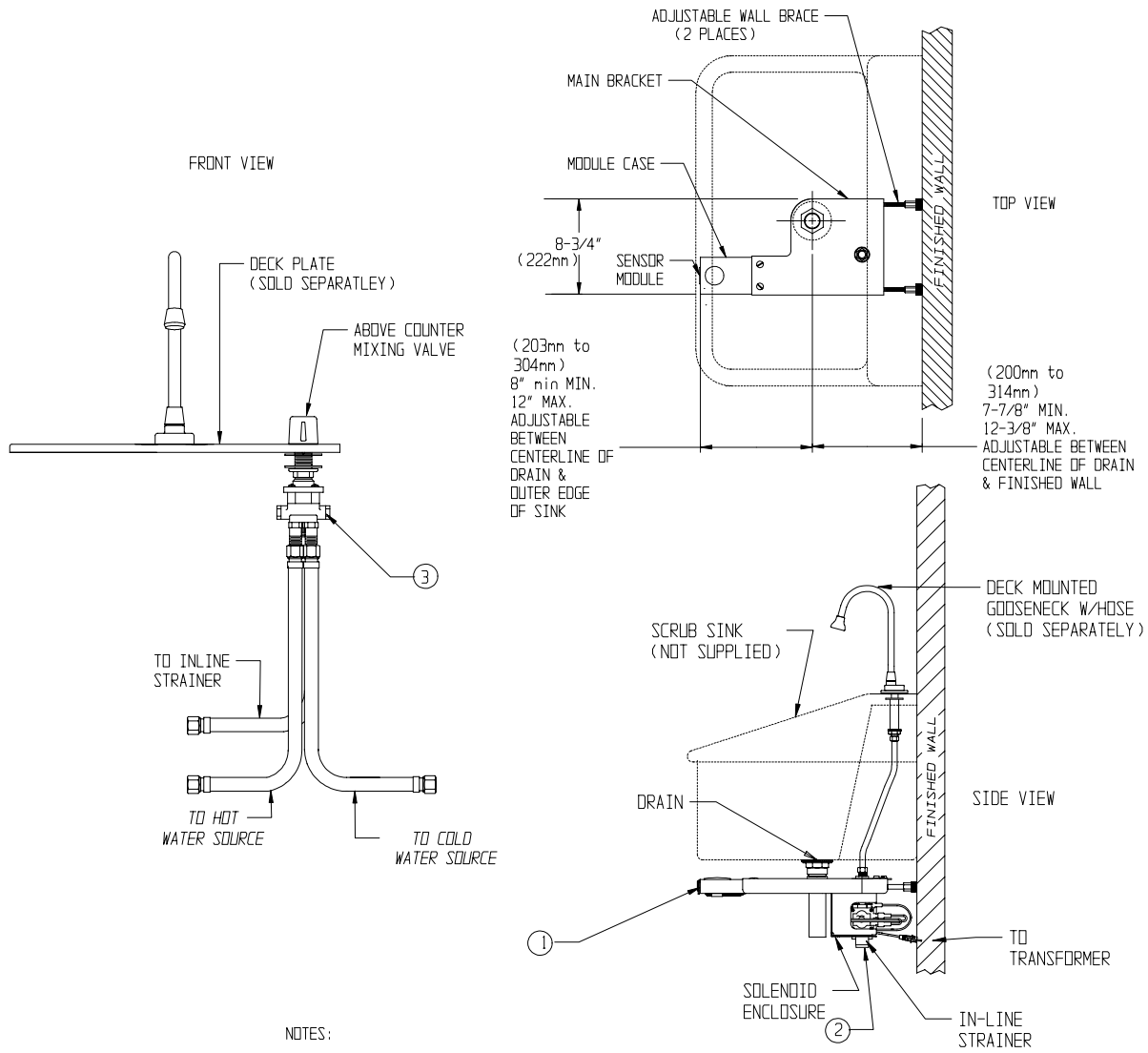
OPERATION

Speakman SENSORFLO faucets have been thoughtfully designed for all in mind. SENSORFLO faucets require no handles to turn, lift, or push. Absolutely no force is required. Simply stand in front of the sink and position leg in front of the faucet's electronic sensing unit and the water will flow. Step away and the faucet shuts off automatically. Operate mixing valve by turning handle to the desired outlet water temperature.

MAINTENANCE (CARE and CLEANING)

Periodically check the solenoid filter for debris. If debris is present, clean filter thoroughly. The finish of your SPEAKMAN SENSORFLO® faucet can be cleaned by using mild soap and warm water. Dry immediately with a soft, clean cloth for best results.

ROUGH-IN MEASUREMENTS



1. ALL DIMENSIONS ARE IN INCHES (MILLIMETERS) UNLESS OTHERWISE SPECIFIED AND ARE SUBJECT TO CHANGE WITHOUT NOTICE.
2. INLET & OUTLET HOSES (3) WITH 3/8" COMPRESSION SWIVEL FEMALE CONNECTIONS SUPPLIED.

REPAIR / REPLACEMENT PARTS

<u>ITEM NUMBER</u>	<u>PART OR GROUP NUMBER</u>	<u>DESCRIPTION</u>
1	RPG66-0141	SENSOR MODULE
2	RPG76-0032	SOLENOID
3	RPG20-1844	ABOVE COUNTER MIXING VALVE ASSEMBLY
NS	RPG66-0010	TRANSFORMER
NS	66-0163	INLET HOSE

SPEAKMAN®

PO Box 191 Wilmington, DE 19899 Phone: 800-537-2107 Fax: 800-977-2747
Visit us on the web at www.speakmancompany.com