

# **SPEAKMAN COMPANY**

## **S-4171-LD Installation, Maintenance & Operation Instructions**

### **EASY-PUSH®**

#### **METERING LAVATORY WIDESPREAD COMBINATION**

#### **DESCRIPTION**

Speakman polished chrome plated EASY-PUSH widespread metering lavatory combination. Brass spout measuring 4 3/4" from center of inlet to center of outlet. EASY-PUSH handles with brass yokes. Concealed cycle adjustment without shutting off water supply. Non-hammering operating units protected by monel mesh screens. Adjustable centers form 6" to 12". Vandal-resistant standard. Water conserving AUTOFLO® device reduces flow to .25 GPC/ .946 LPC to meet existing ANSI A112.18.1M Standard.

#### **SPECIFICATIONS**

SUPPLY: COUPLING OR SWEAT CONNECTIONS.

FLOW RATE: .25 GPC/.946 /LPC

SHIPPING WEIGHT: 6.58 LBS.

#### **OPTIONS**

◇ BOCA – Vandal-Resistant 0.5 gpm Flow Regulator	
◇ PALM – Palm Button	

#### **INSTALLATION**

Screw locknuts down on body assemblies. Place cup washers onto bodies. Apply sealant around base underside of escutcheons. Working from below the sink, insert body assemblies through holes in sink or counter top. From above sink, screw escutcheons onto bodies flush with top of bodies. From under sink, screw locknuts up hand tight. Position bodies so that outlets are accessible and using basin wrench tighten locknuts while holding bodies in place. Wipe off excess sealant from around escutcheons. Apply sealant around base underside of nozzle assembly. Position nozzle in hole of sink or counter top and push down firmly to seal. From under sink, slip channel washer, then spacer onto shank of nozzle. Screw shank nut on and tighten with basin wrench. Wipe off excess sealant from around nozzle base. Screw swivel assembly onto end of nozzle shank and tighten. NOTE: DO NOT OVER TIGHTEN. Screw hoses onto outlets of bodies and tighten. Screw other ends onto swivel assembly and tighten. Connect water supply lines to inlets of bodies and tighten coupling nuts with wrench. Make sure flush plugs are secure in the faucet and outlet device is removed. With drain installed, flush lines by turnings on water supplies to faucet. Flush lines until water supply is clean of all foreign matter. Turn off water supplies and remove flush plugs. Before install metering mountings, remove as much of the standing water in the faucet as possible. This prevents a detrimental pressure build-up that can occur during assembly. Guide mountings into faucet making sure not to nick o-ring. If excessive resistance is felt, relieve the pressure by pushing down on the adjusting piece. Screw mountings into faucet. Wrench tighten Assemble outlet device to outlet of faucet. Loosen the two setscrews in the hub using an allen wrench. Insert metering handle assembly into the hub. NOTE: BE SURE THE BOTTOM PART OF YOKE IS IN CONTACT WITH THE TOP OF THE HUB. Tighten the two setscrews in the hub. Repeat for other side of faucet. Turn water supplies on and check for leaks.

#### **MOUNTING CYCLE TIME ADJUSTMENT INSTRUCTIONS:**

Turn handle adjusting screw with allen wrench clockwise (in) for a shorter cycle time and counterclockwise (out) for a longer cycle time. Push handle to cycle unit. If cycle is not satisfactory, readjust screw.

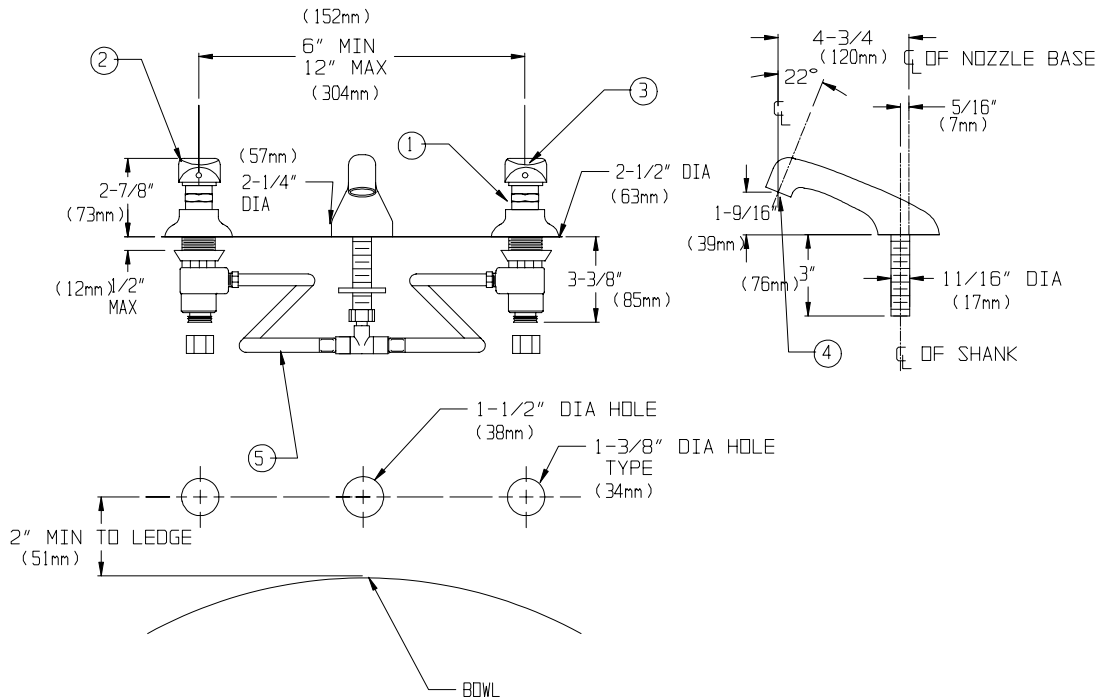
#### **OPERATION**

Simply push on the EASY-PUSH handle to operate the lavatory faucet.

## MAINTENANCE (CARE and CLEANING)

The water supply to the metering faucet must be clean with no contaminants. If it is not then the metering mountings and outlet device will have to be cleaned periodically. The gleaming finish of your SPEAKMAN Commander lavatory faucet can be cleaned by using mild soap and warm water. Dry immediately with a soft, clean cloth for best results.

## ROUGH-IN MEASUREMENTS



### NOTES:

1. INLETS ARE SIZED FOR EITHER COUPLING OR SWEAT CONNECTIONS.
2. ALL DIMENSIONS ARE IN INCHES (MILLIMETERS) UNLESS OTHERWISE SPECIFIED AND ARE SUBJECT TO CHANGE WITHOUT NOTICE.

## REPAIR / REPLACEMENT PARTS

<u>ITEM NO.</u>	<u>PART OR GROUP NUMBER</u>	<u>DESCRIPTION</u>
1	G05-0441-RPR	EASY-PUSH REPLACEMENT UNIT LESS HANDLE ASSEMBLY
2	RPG11-0032	HOT HANDLE ASSEMBLY
3	RPG11-0033	COLD HANDLE ASSEMBLY
2&3	RPG11-0035	HOT & COLD HANDLE ASSEMBLY
4	RPG05-0674-PC	2.2 GPM AERATOR ASSEMBLY
5	G63-0061	FLEX HOSE ASSEMBLY
NS	RPG05-0465	CHAMBER REPAIR KIT
NS	RPG45-0021	CHAMBER WASHER KIT

**SPEAKMAN®**

PO Box 191 Wilmington, DE 19899 Phone: 800-537-2107 Fax: 800-977-2747  
Visit us on the web at [www.speakmancompany.com](http://www.speakmancompany.com)

04/02  
92-1970 Rev-1