

# **SPEAKMAN COMPANY**

## **VS-2954, VS-1001-ADA**

### **Installation, Maintenance & Operation Instructions**

#### **ADA / HANDICAP SHOWER AND BAR**

#### **DESCRIPTION**

Speakman ADA handicap shower system includes hand held shower (VS-100-AF, or VS-100-PC), 5' stainless steel hose (VS-152), vacuum breaker (VS-151-PC), shower arm bracket (VS-150-PC), and 24" grab/ slide bar assembly (VS-153-ADA). Connects to standard shower arm. Shower arm flange (10-0219-PC-P) and 8" shower arm (42-0029-PC) for VS-2954 model only. Handheld shower puts out 2.5 GPM/9.46 LPM to meet ANSI A112.18.1 Standard. ADA Compliant.

#### **SPECIFICATIONS**

SUPPLY: ½" NPT FEMALE  
SHIPPING WEIGHT: 4.9 LBS.  
FLOW RATE: 2.5 GPM/9.46 LPM, MAX.,  
HAND HELD, VARIABLE

#### **OPTIONS**

◇ -PC: Chrome Hand Held Shower
--------------------------------

#### **INSTALLATION**

For VS-2954 model only. Slip the wall flange onto the shower arm. Apply teflon tape clockwise onto the male threads and screw arm into supply piping behind wall. Wrench tighten. Slip wall flange to wall. Check for leaks.

Remove (turn counterclockwise) your existing showerhead from the shower arm. Clean the shower arm threads of any debris and wrap teflon tape in the clockwise direction around threads. Assemble shower arm bracket to the shower arm. Hand tighten firmly. Then assemble the vacuum breaker to the bottom of the shower arm bracket. Make sure the washer is inside the connection. Hand tighten. Assemble the 5' hose to the bottom of the vacuum breaker. Hand tighten firmly. Then attach the other end of the hose to the hand held shower. Make sure the washer is in the breaker to hose connection and the hose to hand held connection seals on the o-ring at the bottom of the hand held to prevent leaks. When installing the bar, the location is optional but limited to the length of the hose. For installation of the grab/ slide bar, hold the bar against the wall in the chosen location. Using a pencil, mark the drill hole positions (4 in total) for the lower and upper mounting brackets. If using as a grab bar, be sure to fasten securely to a wall stud. (Note: upper mounting bracket height is adjustable) To mount the brackets, use a No. 10 (0.1935 inches/5.5mm) masonry drill bit to make a hole approximately 1-3/8 inches (35 mm) deep. Push the plastic anchors (4 in total) into the drilled holes, unless your mounting to wall studs, where anchors can be omitted. (Note: plastic anchors may not be suitable for all types of wall construction, seek professional help if in doubt) Fix upper mounting bracket and then the lower mounting bracket to the wall using four (4) screws provided. Push the bracket covers over the mounting brackets while paying close attention to cover orientation for proper placement.

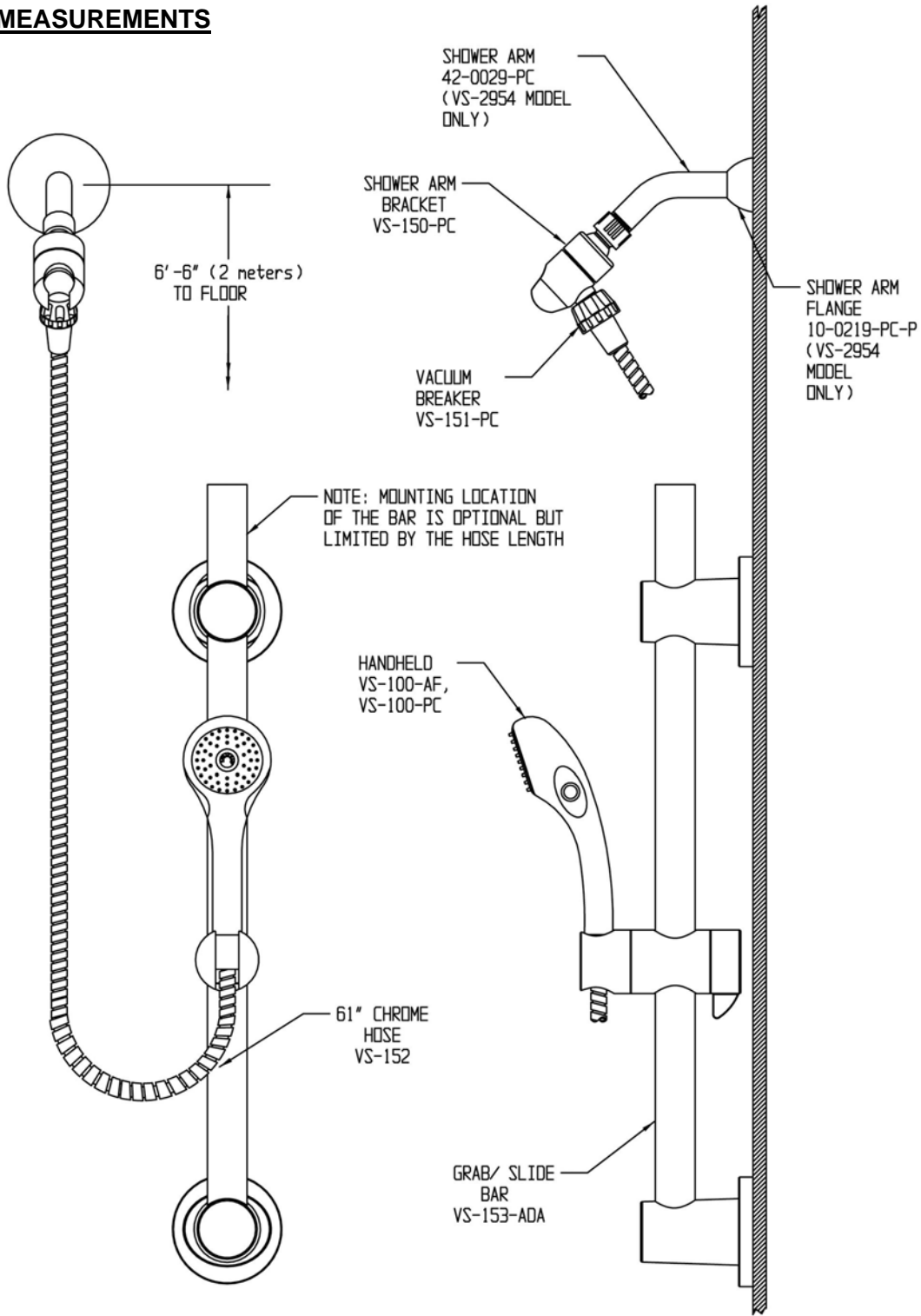
#### **OPERATION**

To operate the handheld shower, push the pause button to one side to bring the flow down to a trickle, then simply push it to the other side to turn the flow back on full force.

#### **MAINTENANCE**

The finish of your SPEAKMAN VERSATILE® hand held shower and all of the other components can be cleaned by using mild soap and warm water. Dry immediately with a soft, clean cloth for best results. The flow control device limits water flow to 2.5 gallons per minute, and is located in the base of the handheld. The small orifice in the flow regulator, resulting in lower flow and a weaker performance, may become clogged. To clean the flow regulator, simply remove the hose from the hand shower and clean as necessary.

# ROUGH-IN MEASUREMENTS



- NOTE:
1. ALL DIMENSIONS ARE IN INCHES (MILLIMETERS) UNLESS OTHERWISE SPECIFIED AND ARE SUBJECT TO CHANGE WITHOUT NOTICE.
  2. UNLESS OTHERWISE SPECIFIED, ALL INLETS AND OUTLETS ARE 1/2" NPT FEMALE.
  3. THE LOCATION OF THE GRAB/ SLIDE BAR IS OPTIONAL, BUT LIMITED BY THE 61" HOSE LENGTH RUNNING FROM THE SHOWER ARM BRACKET CONNECTION TO THE HAND SHOWER.

**SPEAKMAN®**

PO Box 191 Wilmington, DE 19899 Phone: 800-537-2107 Fax: 800-977-2747  
 Visit us on the web at [www.speakmancompany.com](http://www.speakmancompany.com)

11/07  
 REV. 1  
 92-2681